

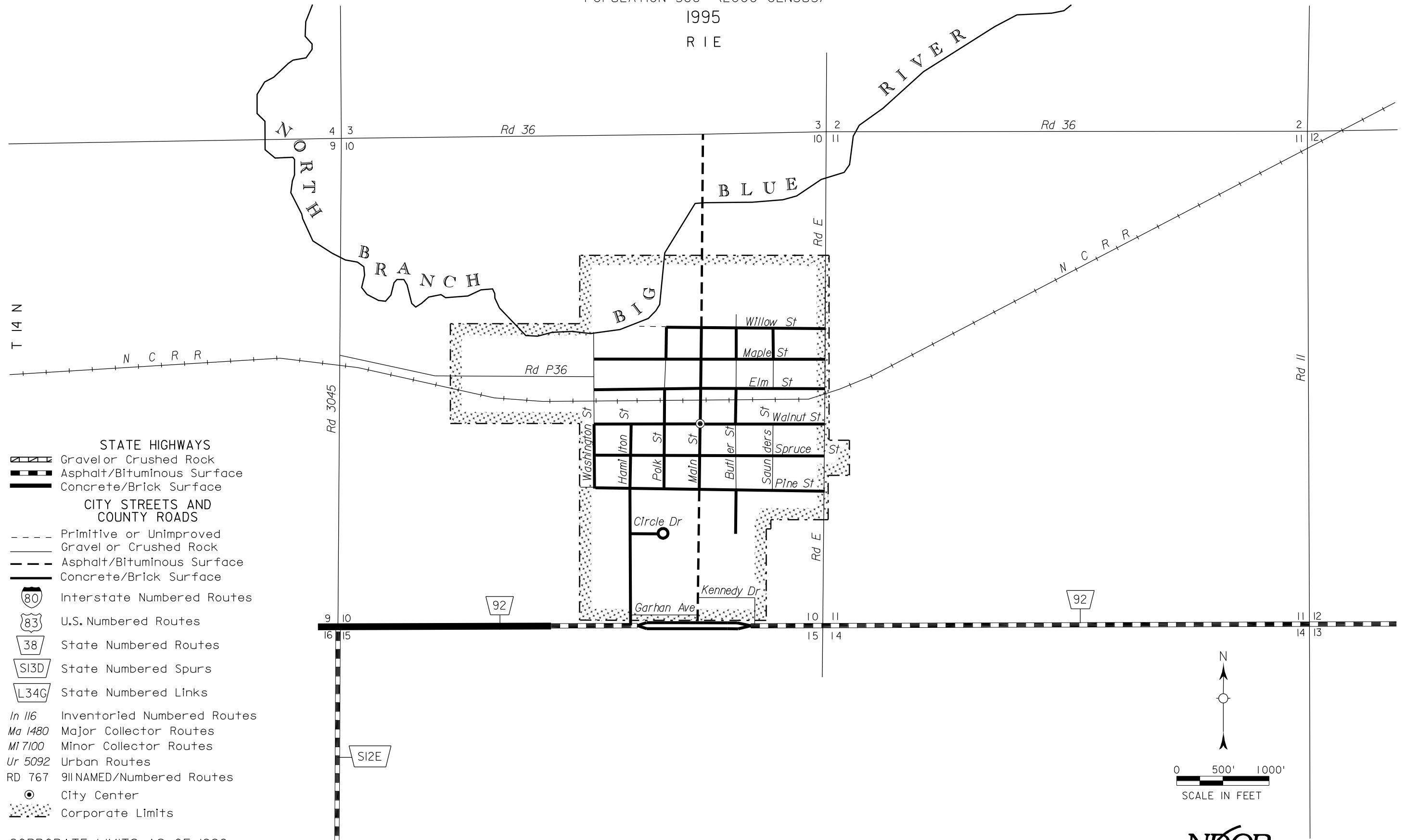
RISING CITY

BUTLER COUNTY
NEBRASKA

POPULATION 386 (2000 CENSUS)

1995

R I E



- STATE HIGHWAYS**
- Gravel or Crushed Rock
 - Asphalt/Bituminous Surface
 - Concrete/Brick Surface
- CITY STREETS AND COUNTY ROADS**
- Primitive or Unimproved
 - Gravel or Crushed Rock
 - Asphalt/Bituminous Surface
 - Concrete/Brick Surface
- Interstate Numbered Routes
 - U.S. Numbered Routes
 - State Numbered Routes
 - State Numbered Spurs
 - State Numbered Links
 - In 116* Inventoried Numbered Routes
 - Ma 1480* Major Collector Routes
 - MI 7100* Minor Collector Routes
 - Ur 5092* Urban Routes
 - RD 767* 911NAMED/Numbered Routes
 - City Center
 - Corporate Limits

CORPORATE LIMITS AS OF 1996
STATE HIGHWAYS CORRECTED TO 1996

